

# BALTIC



# BALTIC WHITE



## SIZES AVAILABLE

60 X 120cm | 24"X48"

60 X 60cm | 24"X24"

30 X 60cm | 12"X24"

30 X 30cm | 12"X12"



## FINISHES

MATT

# BALTIC BEIGE



## SIZES AVAILABLE

60 X 120cm | 24"X48"

60 X 60cm | 24"X24"

30 X 60cm | 12"X24"

30 X 30cm | 12"X12"

## FINISHES

MATT



# BALTIC GREY



## SIZES AVAILABLE

60 X 120cm | 24"X48"

60 X 60cm | 24"X24"

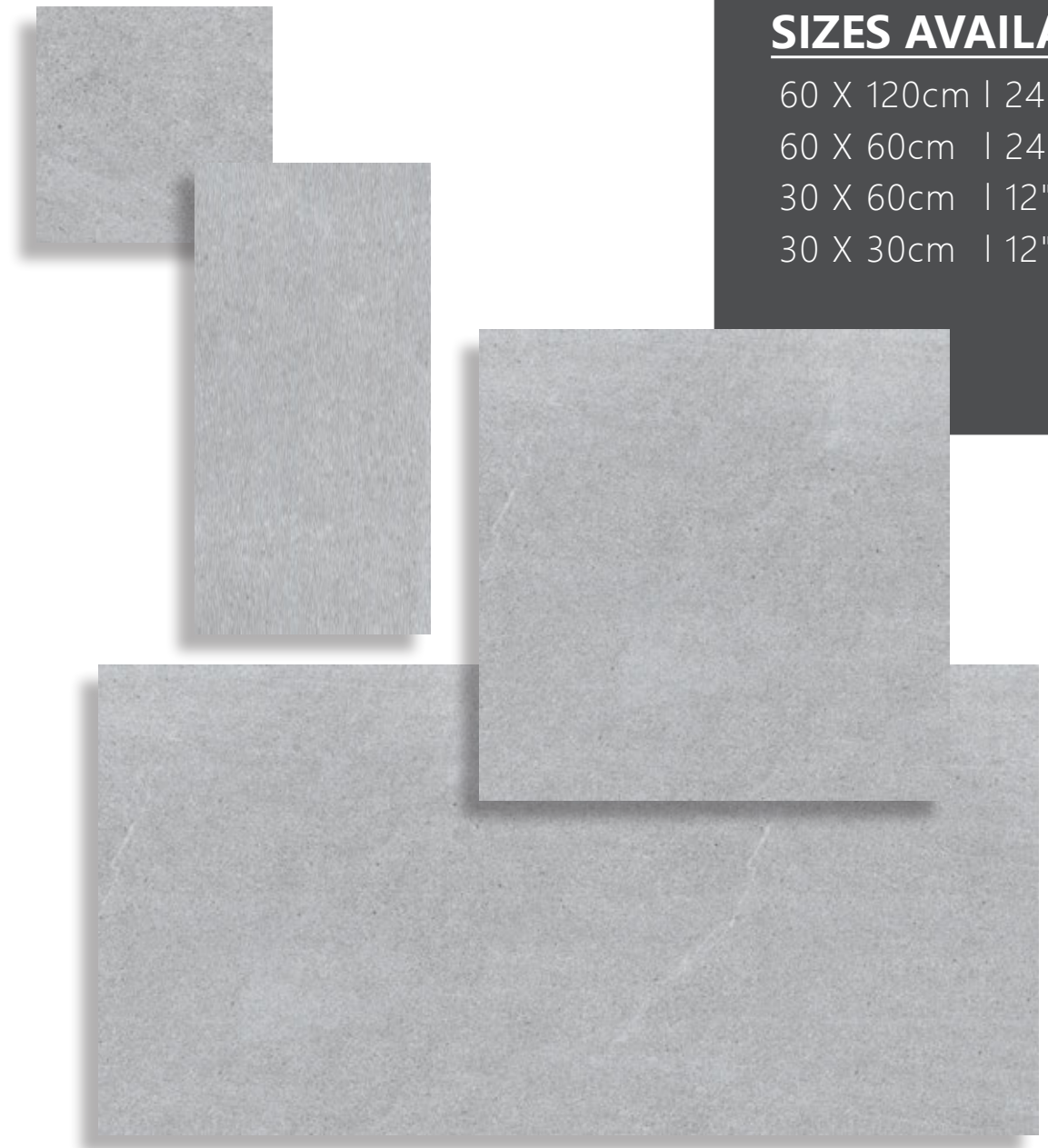
30 X 60cm | 12"X24"

30 X 30cm | 12"X12"

## FINISHES

MATT

# BALTIC ASH



## SIZES AVAILABLE

60 X 120cm | 24"X48"

60 X 60cm | 24"X24"

30 X 60cm | 12"X24"

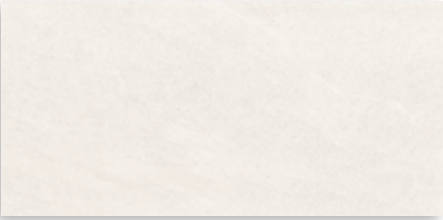
30 X 30cm | 12"X12"

## FINISHES

MATT



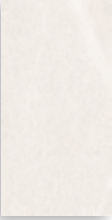
BALTIC WHITE



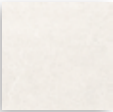
60 X 120cm  
24"X48"



60 X 60cm  
24"X24"

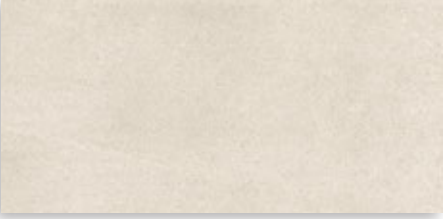


30 X 60cm  
12"X24"



30 X 30cm  
12"X12"

BALTIC BEIGE



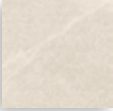
60 X 120cm  
24"X48"



60 X 60cm  
24"X24"



30 X 60cm  
12"X24"



30 X 30cm  
12"X12"

BALTIC GREY



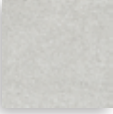
60 X 120cm  
24"X48"



60 X 60cm  
24"X24"



30 X 60cm  
12"X24"

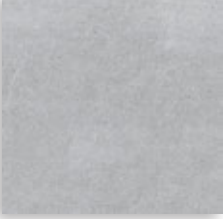


30 X 30cm  
12"X12"

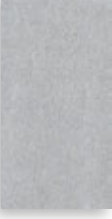
BALTIC ASH



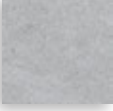
60 X 120cm  
24"X48"



60 X 60cm  
24"X24"



30 X 60cm  
12"X24"



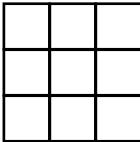
30 X 30cm  
12"X12"

TECHNICAL SPECIFICATIONS

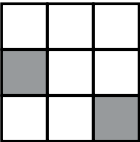
TECHNICAL CHARACTERISTIC	STANDARD TEST METHOD	ISO STANDARD REQUIREMENT	OUR VALUES
Length & Width	ISO 10545-2	±0.6%MAX	±0.30%Max
Thickness	ISO 10545-2	±5.0%MAX	±5.0%Max
Sides Straightness	ISO 10545-2	±5%MAX	±0.25%Max
Rectangularity	ISO 10545-2	±0.5%MAX	±0.25%Max
Flatness : a) Centre Curvature b) Edge Curvature c) Warpage	ISO 10545-2 ISO 10545-2 ISO 10545-2	±0.5%MAX ±0.5%MAX ±0.5%MAX	±0.20%Max/Max2.0mm ±0.20%Max/Max2.0mm ±0.20%Max/Max2.0mm
Surface Quality	ISO 10545-2	≥95%FREE From visible defect	Comply
Water Absorption	ISO 10545-3	≤0.5%	≤0.20%
Breaking Strength	ISO 10545-4	≥1300N	≥1300N
Modulus Of Rupture	ISO 10545-4	≥35N/mm <sup>2</sup> Individual ≥32N/mm <sup>2</sup>	≥35N/mm <sup>2</sup> Individual ≥32N/mm <sup>2</sup>
Abrasion Resistance a) Deep Abrasion For Unglazed Tiles b) Surfaces Abrasion For Glazed Tiles	ISO 10545-6 ISO 10545-7	≤175mm <sup>3</sup> Manuf.to state abrasion class, cycle and passed	≤160mm <sup>3</sup> ≥PEI 3 (Dependent On Product Type)
Crazing Test (glazed Tiles)	ISO 10545-11	No Sign Of Crazing	No Sign Of Crazing
Frost Resistance	ISO 10545-12	Required	No Visible Crack
Chemical Resistance a) low concentrations b) household chemicaais and Swimming pool salts	ISO 10545-13 ISO 10545-13	Manuf. to state ≥class B	Class A Class B(For Polished Tiles) Class A Class B(For Polished Tiles)
Stain Resistance a) for unglazed tiles b) for glazed tiles	ISO 10545-14 ISO 10545-14	Manuf. to state ≥class 3	≥Class 3 ≥Class 3
Slip Resistance (Excluding Polished,Lappato And Satin Finishing)	AS/NZS 4586 App.A	Manuf. to state	Wet Pendulum≥P4 (Dependent On Product Type)

PACKING SPECIFICATIONS

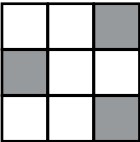
SERIES	SIZES	PCS/CTN	m <sup>2</sup> /CTN	KG/CTN	m <sup>2</sup> /PLT	KG/PLT	CTN/PLT
BALTIC	60x120/24”x48”	2	1.44	32	80.64	1792	56
	60x60/24”x24”	4	1.44	30	57.60	1200	40
	30x60/12”x24”	8	1.44	30	57.60	1200	40
	30x30/12”x12”	11	0.99	21	55.44	1176	56



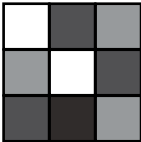
UNIFORM  
VARIATION  
V1



SLIGHT  
VARIATION  
V2



MODERATE  
VARIATION  
V3



SUBSTANTIAL  
VARIATION  
V4



Foshan Casagres International Co, Ltd.

[info@casagresintl.com](mailto:info@casagresintl.com)

[www.casagresintl.com](http://www.casagresintl.com)

